

GOATS

10-10 SUPER POWERMAN

This Parts List is for
machines with
Serial No. 10-10-153601 and up

ORDER PARTS FROM YOUR DISTRIBUTOR OR JOBBER

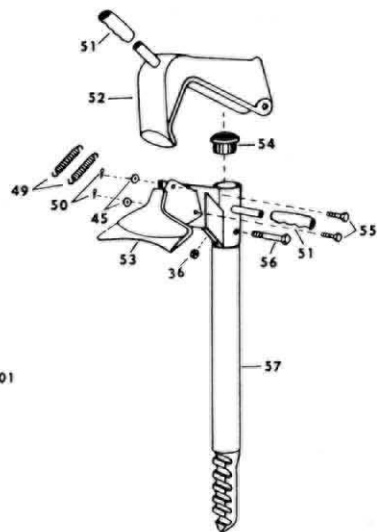
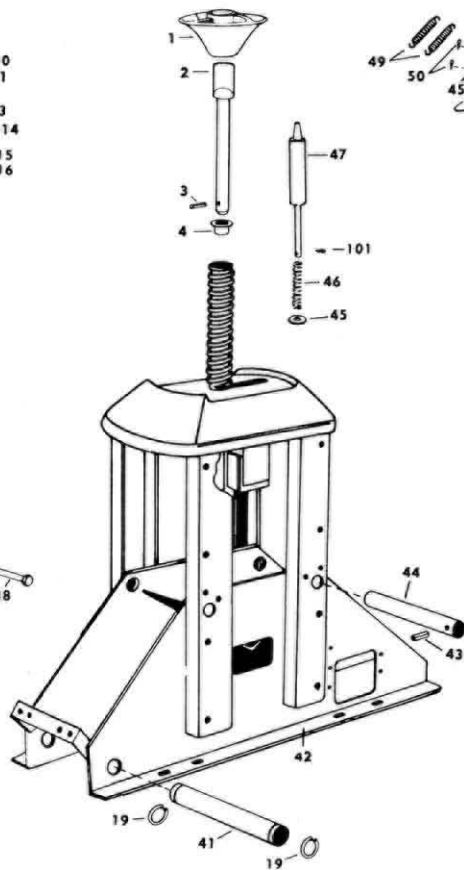
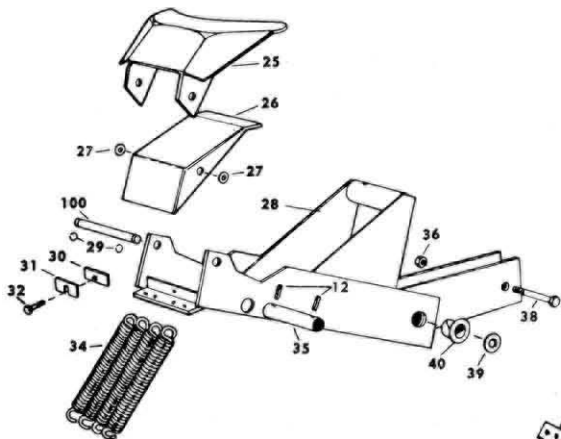
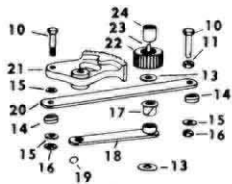
Ref. No.	Part No.	Description	Ref. No.	Part No.	Description
1	000433	Hold Down Con	68	102376	½ x 3½" Cap Screw N.C.
2	101273	Center Shaft	67	100977	Top Bead Breaker Arm
3	000304	K. 1¼" Roll Pin	58	104155	Knob
4	000510	1¼ x 1¼ Nylon Bearing	59	104176	Detent Arm
10	101296	¾" Drive Gear Bolt (Ea.)	60	104284	Detent Spring
11	100958	Self Aligning Washer	61	103814	½ x 1½ Cap Screw W.F.
12	101181	3/16" x 1" Roll Pin	62	104354	Stud Kit
13	101156	1¼" Machine Bushing (Ea.)	63	104198	¾" x 6" Cap Screw N.F.
14	100960	Self Aligning Bushing (Ea.)	64	104162	Detent Tube
15	101253	¾" Machine Bushing (Ea.)	65	104120	Support Bracket
16	100957	¾" Lock Nut (Ea.)	66	101081	7" Cylinder
17	101352	T i Bar Nylon Bearing	67	000372	¼ x 90° Street Elbow
18	101298	Gear Tie Bar	68	101898	¾" Hose Fitting (Ea.)
19	100964	1¼" Snap Ring (Ea.)	69	101404	Hose and Clamp Assy
20	101089	Drive Gear Bar Assy	70	101411	1 Qt. Special Hydraulic Oil (Ea.)
21	101087	Drive Gear	71	102452	Center Panel R.H.
22	100951	Pinion	72	102459	¾" Self Tapping Bolt (Ea.)
23	101091	Shaft Key	73	101112	Rear Panel
24	101369	Lower Shaft Bearing	74	101110	K. Self Tapping Screw (Ea.)
25	101042	Large Lower Shoe	75	000768	Combination Tool
26	101251	Small Lower Shoe	76	104366	Front Panel Comp.
27	100994	Shoe Spacer	77	106259	Lube Bottle
28	101036	Power Arm	78	000598	7/16" x ¾" Cap Screw N.C.
29	101001	¾" Snap Ring (Ea.)	79	000534	7/16" Lock Washer
30	105133	Shoe Adjusting Bar	80	000755	7/16" Square Nut
31	101506	Shoe Adjusting Shim Kit	81	000490	Lube Bracket
32	105131	¾" x 1¼" Self Tapping Screw	82	000491	Lube Applicator
34	100999	Return Spring (Ea.)	84	000628	5/16" Lock Nut N.F. (Ea.)
35	101002	Upper Cylinder Shaft	85	104163	Foot Pedal
36	101039	½" Lock Nut N. C. (Ea.)	86	104199	5/16" x ¾" Cap Screw N. F. (Ea.)
38	101040	½" x 3¼" Cap Screw N. C.	87	104147	K. x 5" Cap Screw N. F.
39	101651	Machine Bushing (Ea.)	88	102937	¾" Lock Nut N. F. (Ea.)
40	101351	Axle Nylon Bearing (Ea.)	89	104108	Foot Valve Plate
41	101000	Lower Cylinder Shaft	90	104148	Flexible Inlet Assy.
42	104334	Chassis	91	103815	¾" x 1" Cap Screw N. F. (Ea.)
43	101371	¼" x 1¼" Roll Pin (Ea.)	92	103260	½" Lock Nut N. F. (Ea.)
44	100970	Power Arm Axle	93	104149	Valve Spring (Ea.)
45	010027	½" Washer (Ea.)	94	104154	½" x 4½" Clevis Pin (Ea.)
46	100952	Positioning Pin Spring	95	104266	Valve Complete
47	101343	Positioning Pin	96	102469	Poppet (Ea.)
48	105678	Plastic Breather Plug	97	102468	Poppet Spring (Ea.)
49	101106	Top Bead Breaker Shoe Spring (Ea.)	98	104355	Valve Cap (Ea.)
50	102278	¾" x 1" Cotter Pin (Ea.)	100	101003	Lower Shoe Shaft
51	100979	Top Bead Breaker Handle Grip (Ea.)	101	102928	3/16" x 1" Cotter Pin
52	101163	Top Bead Breaker Nose	102	104110	Valve Bracket
53	100988	Top Bead Breaker Shoe Comp.	103	105668	Center Panel L. H.
54	000437	Cap Tube	104	104209	Muffler
55	102276	Clevis Pin	105	108016	Warning Decal
			106	108059	Inflation Warning Decal

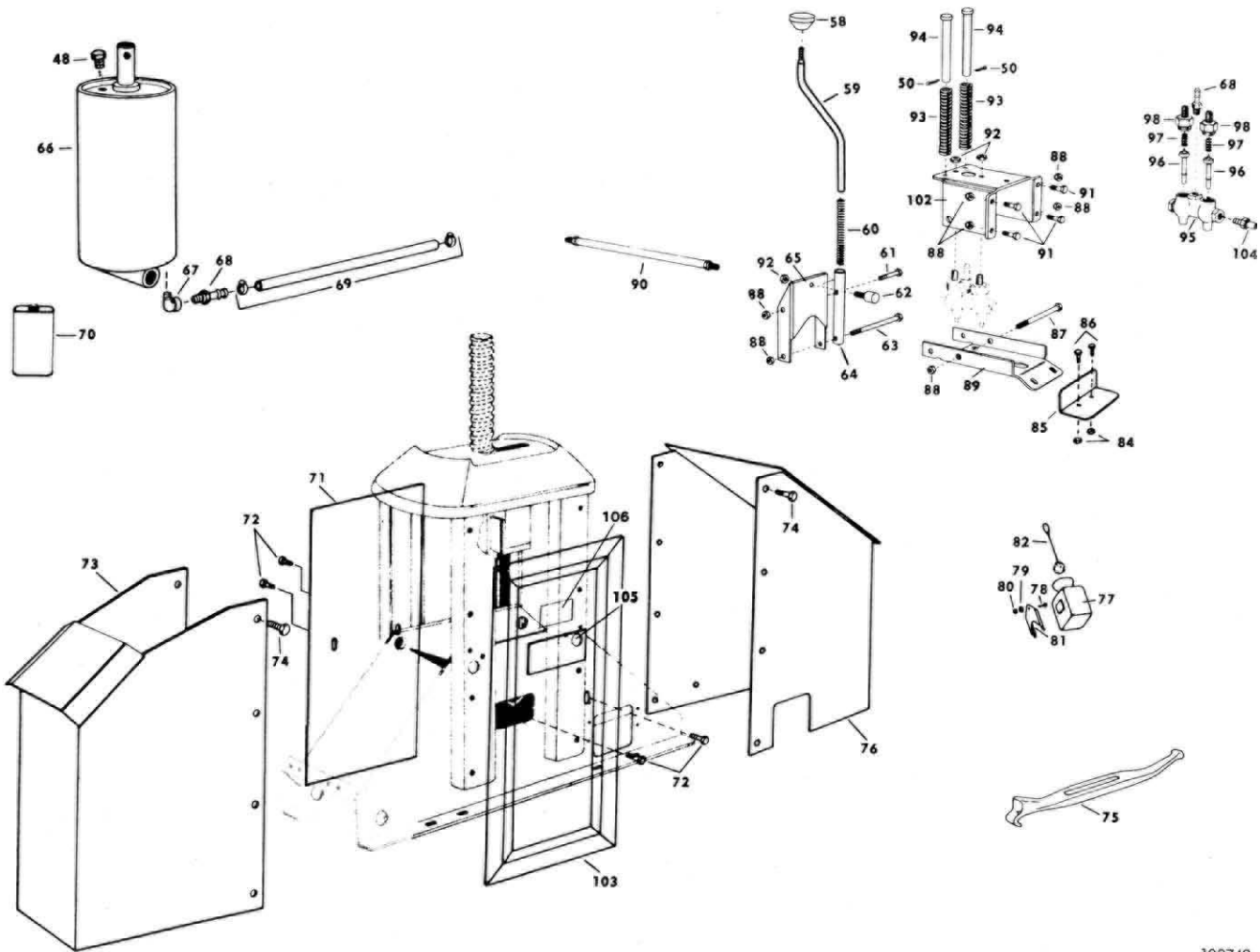
When ordering parts always give the following information:

(1) Part Number (2) Description (3) Serial Number of Your Machine

COATS

10-10 SUPER POWERMAN





INSTALLATION INSTRUCTIONS AND LUBE DISPENSER INSTALLATION

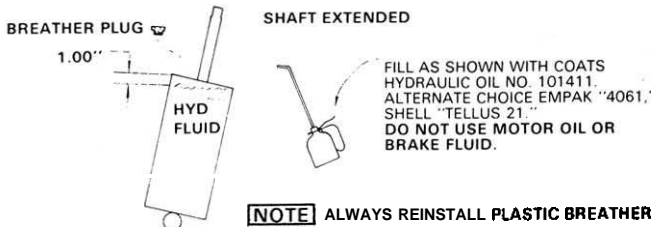
1. The Coati 10.10 Super Powerman can be bolted to the floor with sufficient anchors through the holes on each side of the base. Two diagonal anchors are sufficient.
2. The best operating air pressure is 150 psi at the machine. Do not exceed 175 psi at the machine. The 10.10 is furnished with a 1/4" NPT male fitting for easy connection. A 1/4" I. D. hose, or pipe, for connection to the machine is satisfactory. Sufficient air pressure will assure good performance.
3. For installing the Lube Dispenser, refer to the parts list on page 2. Remove the upper bead loosener assembly from the machine. Insert the cap screw, ref. no. 78, through the mounting hole of the lube bracket, ref. no. 81. Insert the cap screw through the hole of the front panel, ref. no. 76. Reach through the oblong hole on the front panel, and place 7/16" lock washer, ref. no. 79, on cap screw. Thread the 7/16 square nut, ref. no. 80, on cap screw hand tight. Place the lube bottle, ref. no. 77, on the lube bracket, ref. no. 81. Pivot the lube bottle and bracket to an approximate angle as shown on photo on page 1. Using a 3/4" wrench on the nut and a 5/8" wrench on the bolt, secure the nut. Replace the upper bead loosener assembly.

MAINTENANCE

1. The moving parts of the Coats 10.10 Super Powerman are self-lubricating through the use of powdered metal or nylon bearings for a lifetime of performance.
2. Lower bead breaker shoe adjustment:
 - A. Remove side panels, ref. no. 71 and 103.
 - B. Remove end panels adjacent shoe, ref. no. 73.
 - C. Loosen 3/8 x 1/4 self-tapping bolt, ref. no. 32.
 - D. Add or remove shims to bring shoe into adjustment. Small lower shoe, ref. no. 26, should clear a 13", 1 4 or 15" rim by 1/16" to 1/8".
 - E. Replace end and side panels.

CYLINDER MAINTENANCE

It is important that the cylinder be filled to the proper level at all times. If the oil becomes low, the machine will surge at the beginning of its stroke. A special hydraulic oil must be used. To fill, remove the (2) center panels by removing (4) 3/8" self tapping bolts. Remove the rear panel by removing (8) 3/8" self tapping screws. Disconnect (4) return springs. Depress foot pedal and run cylinder to the top of its stroke. Remove plastic breather plug. Fill cylinder to within 1" from the top of access hole. REPLACE PLASTIC BREATHER PLUG. Push downward on power arm to retract cylinder. Replace springs, rear panel, and center panels.



TROUBLE SHOOTING

LOSS OF POWER

If machine appears to have a loss of power, the following items should be checked:

- 1) Low input air pressure to machine.
- 2) Clogged inlet line or valve.
- 3) Pinched or kinked hose.
- 4) Excessive air leaks.
- 5) Foot pedal may be bent and doesn't actuate valve fully.
- 6) Dirty Alter — Alter is located in the street ell on the bottom ell the surge tank.
- 7) Breather plug vent in the top of the power cylinder may be clogged.
- 8) Debris in the cylinder oil — due to leaving plastic plug out of cylinder top.

MACHINE FAILS TO RETURN

If bead looseners and center shaft fail to return, the following items should be checked:

- 1) Foot Valve poppet stuck.
- 2) Pinched or kinked hose.
- 3) Breather plug vent clogged.
- 4) Broken return springs.
- 5) Unlubricated drive gears (under table top).