

Converter Instructions:

To Convert the COATS 1001A from –
220 three Phase to 220 single phase.

Remove the white input lead form reverse contactor terminal 3.
Tape the end of the white lead to prevent shorting.

Remove the strap from reverse 13 to forward 13.

Add straps - forward 13 to forward 3, reverse 13 to reverse 3.

Remove motor wire from reverse 14 and place on reverse 2.

Place converter leads on reverse 14 and reverse 2.

If motor runs backwards – reverse the white motor wire on reverse
4 with the black motor wire on reverse 6.

INSTRUCTIONS

1. REMOVE GREEN JUMPER WIRE F13 - R13
2. REMOVE WHITE POWER CABLE FROM R3. CUT OFF AND INSULATE.
3. ATTACH JUMPERS F3 - F13; R3 - R13.
4. REVERSE WHITE AND BLACK MOTOR CONDUCTORS; WHITE TO R6 - BLACK TO R4
5. MOVE GREEN OR RED MOTOR CONDUCTOR TO R2
6. CONNECT CAPACITOR LEADS TO R2 AND R14 AS SHOWN.
7. CUT OFF WHITE POWER CALBE CONDUCTOR AT PLUG AND INSULATE.
8. REMOVE ORIGINAL PLUG AND INSTALL NEW 220 VAC PLUG AS SHOWN
9. USE TIE WRAPS AS NEEDED

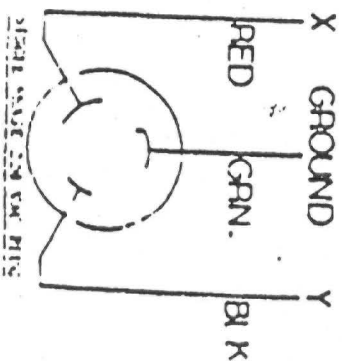
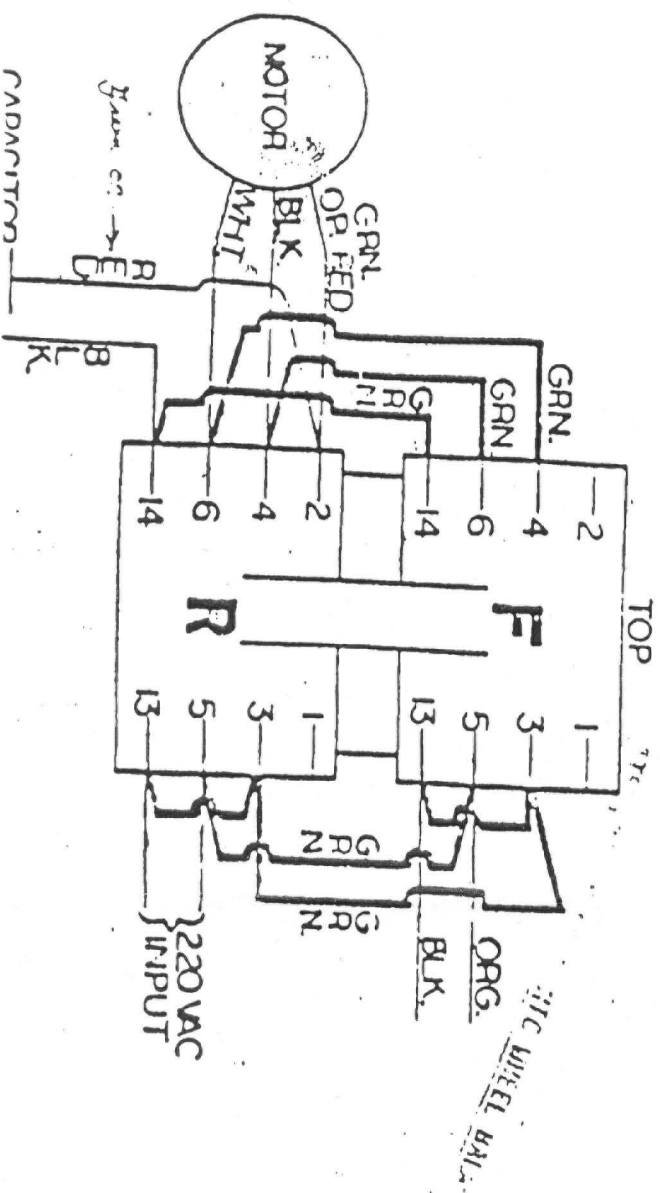
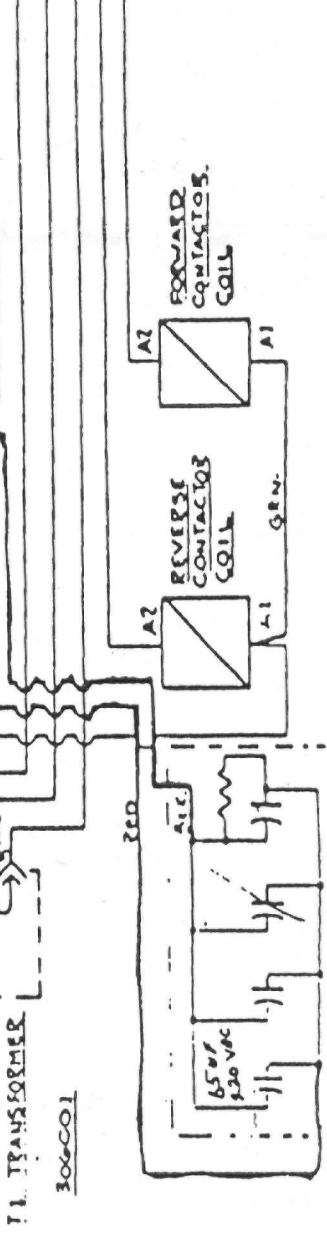
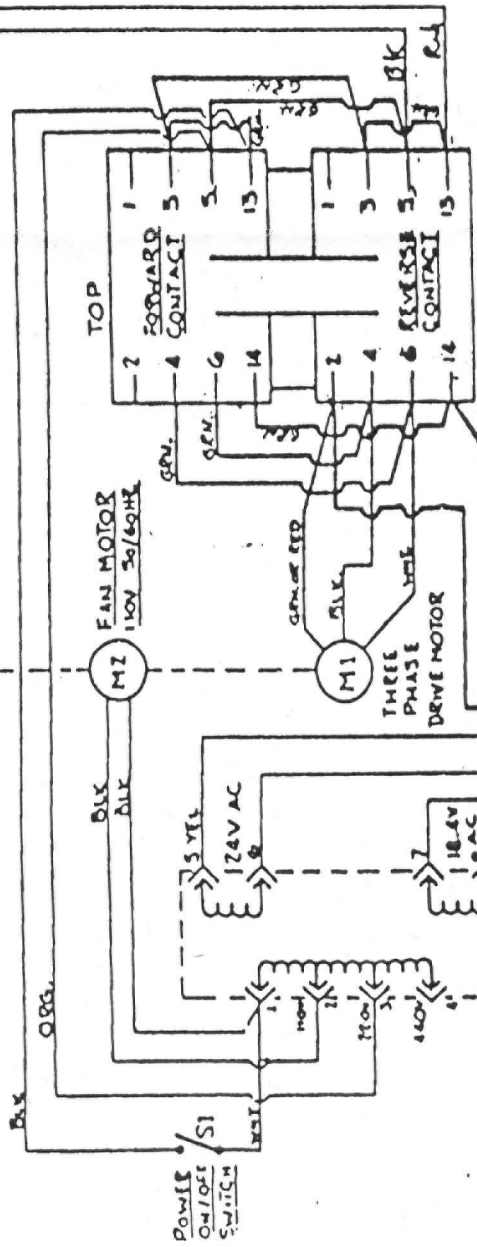
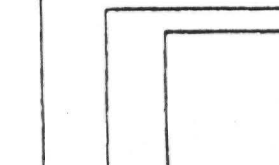
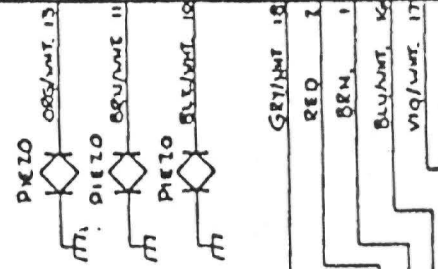
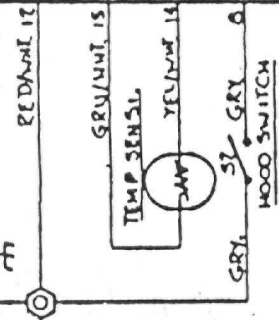
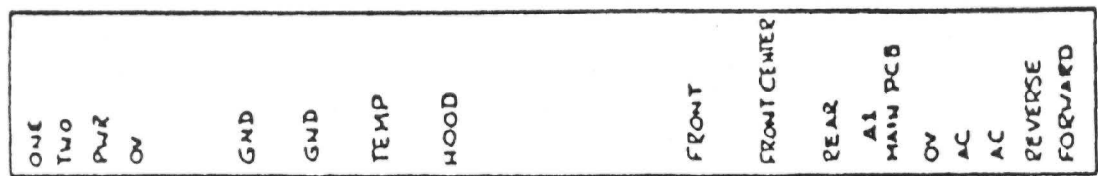


PLATE 11
 ASSY.
 309007

C143083



PHASE CONVERTER ASSY 309071

WIRING DIAGRAM	
220VAC 1 PHASE	
THE COATS CO. C	783 A